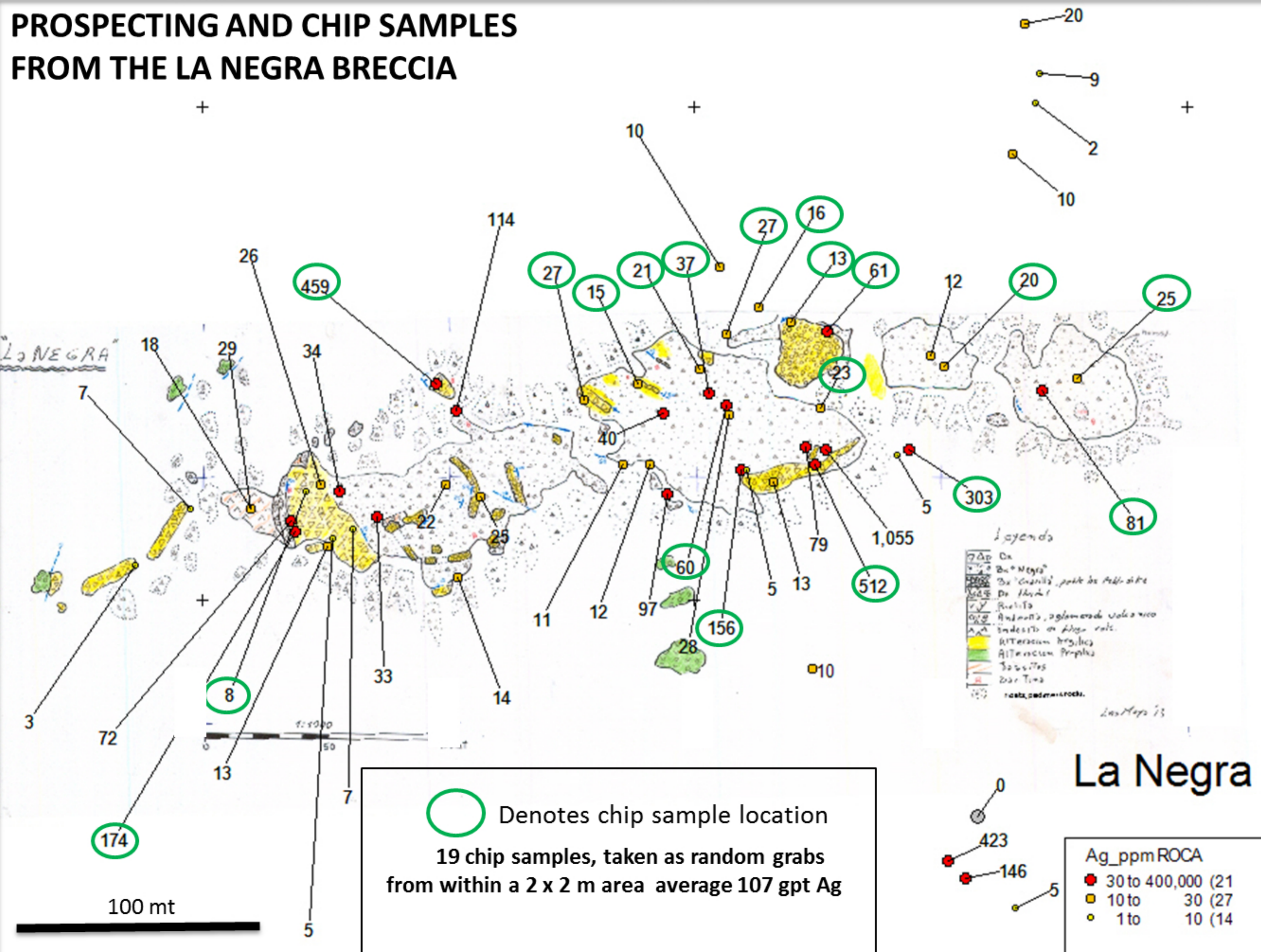
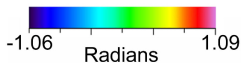
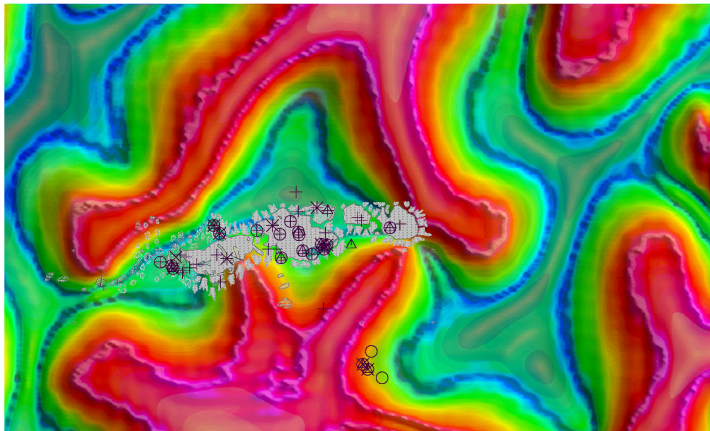


PROSPECTING AND CHIP SAMPLES FROM THE LA NEGRA BRECCIA



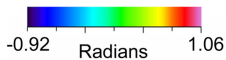
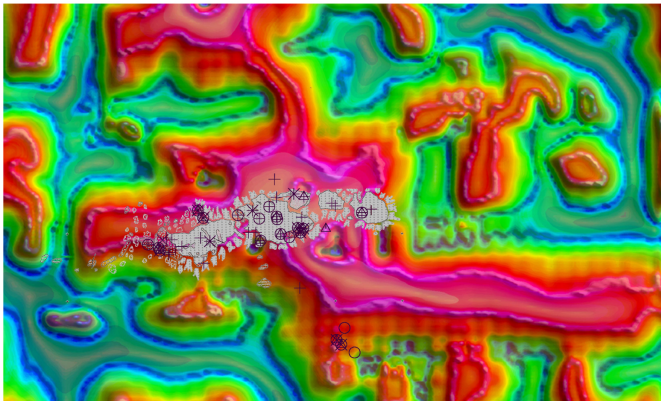
Conductivity: 2nd Tilt, HTA overlay



Ag > 50 ppm Δ
Au > 50 ppb \times
Cu > 100 ppm \circ
Pb > 500 ppm $+$

Processed conductivity with mineralized breccia outcrop indicates breccia may be much larger than exposed

Magnetics: RTP, UCR 100, 2nd order Tilt, HTA overlay



- Ag > 50 ppm \triangle
- Au > 50 ppb \times
- Cu > 100 ppm \circ
- Pb > 500 ppm $+$

Processed magnetics with mineralized breccia outcrop shows breccia may be much larger than exposed