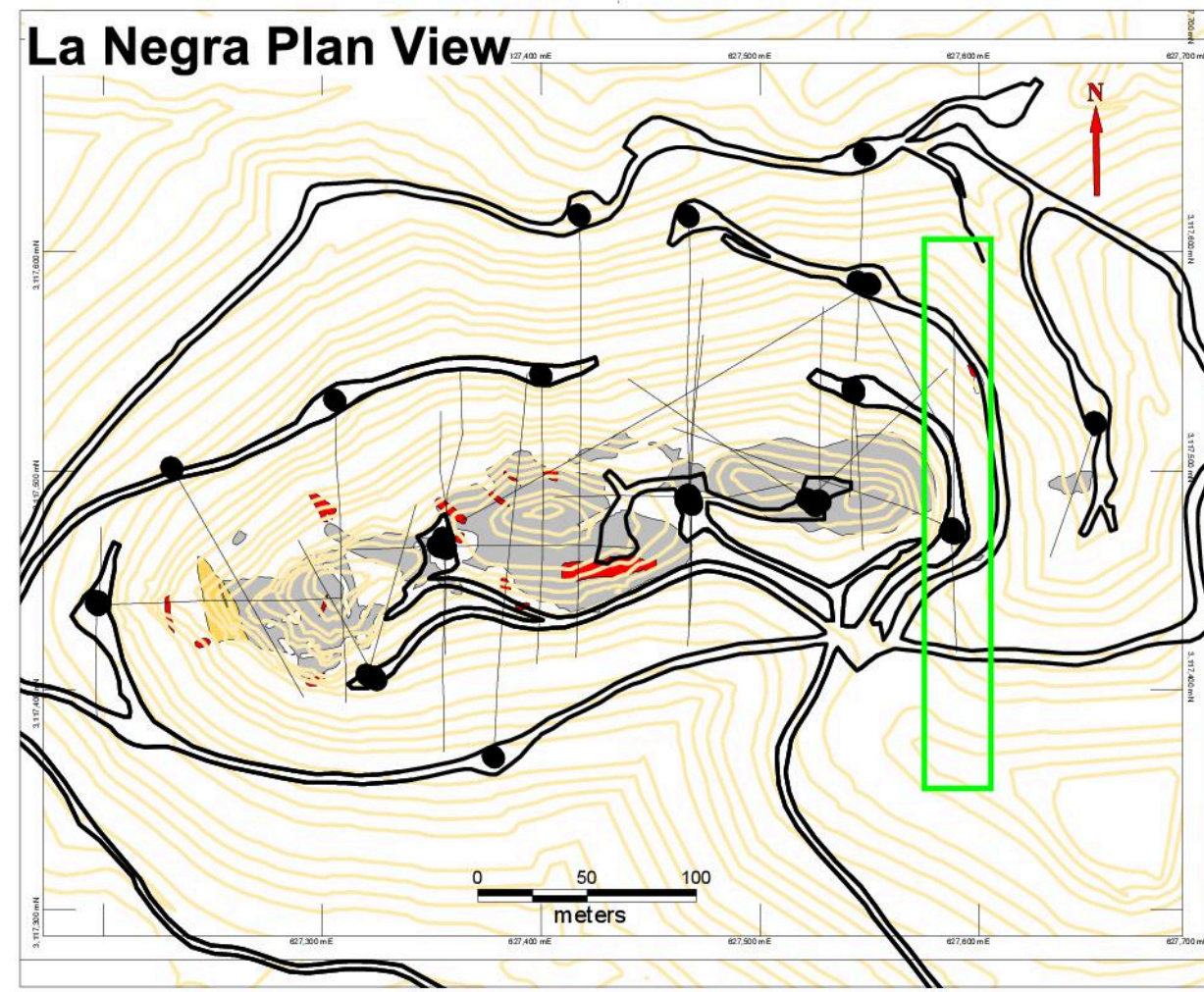
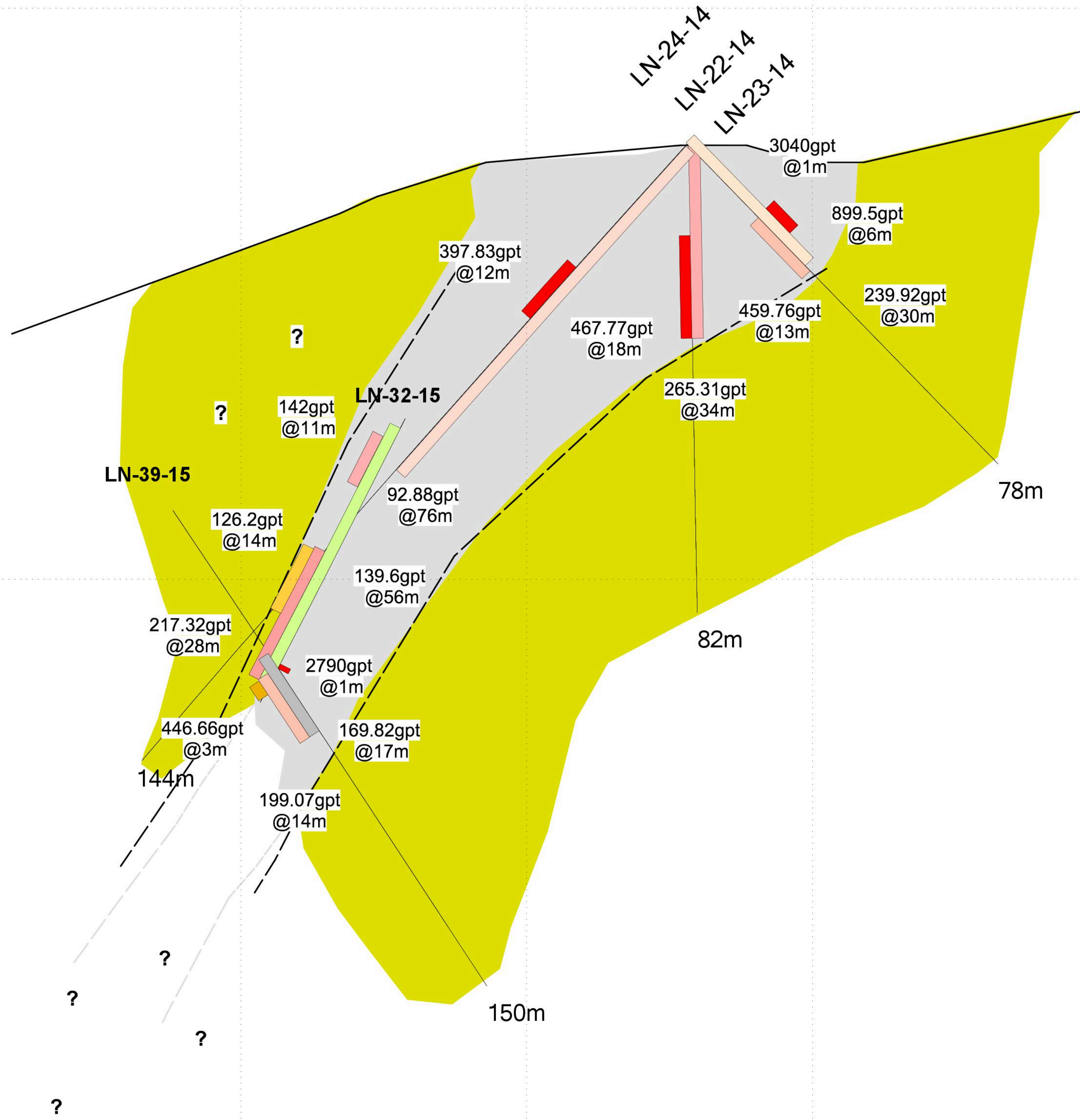
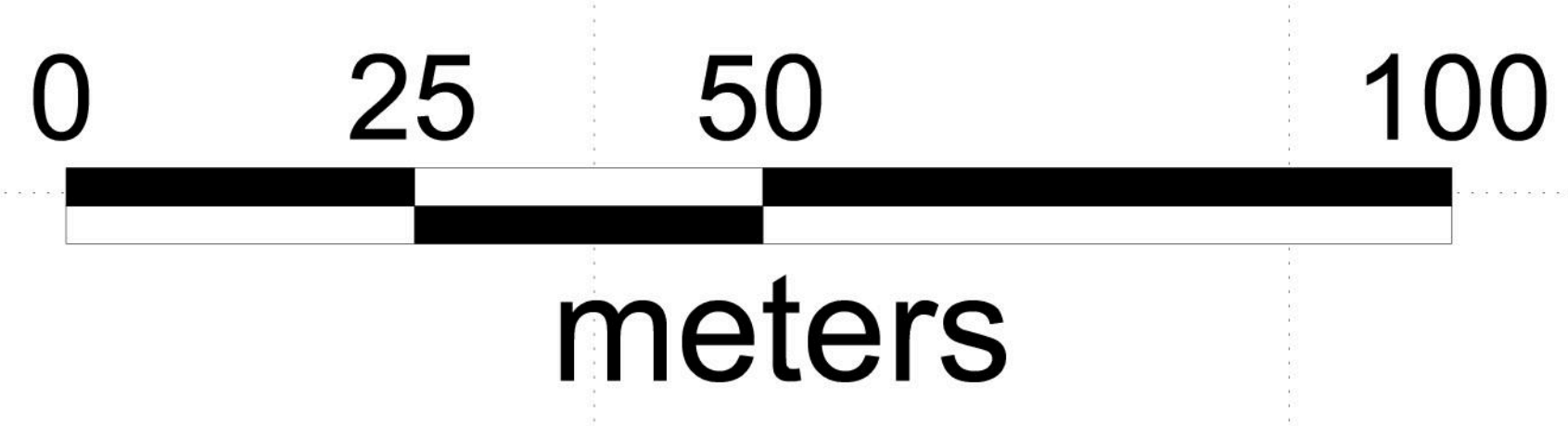


3,117,600mN 3,117,550mN 3,117,500mN 3,117,450mN 3,117,400mN 3,117,

Looking East



**Cross Section
20 meters wide**



| | |
|--|------------------------------------|
| | Breccias |
| | Argillic/Phyllic Alteration |
| | Propylitic Alteration |
| | Contacts |

| | |
|-------------------|--------------------------------|
| | |
| Date: 18/05/2015 | XS-627589 |
| Author: MJM | |
| Office: Hilo, Mex | |
| Drawing: GGallego | |
| Scale: 1:500 | Projection: Non-Earth (meters) |

3,117,550mN 3,117,500mN 3,117,450mN

200mRL
100mRL
0mRL

200mRL
100mRL
0mRL

17,650mN 3,117,600mN 3,117,550mN 3,117,500mN 3,117,450mN 3,117,400mN

Looking East

200mRL

100mRL

0mRL

200mRL

100mRL

0mRL

LN-35-15

LN-28-15
LN-27-15
LN-26-15

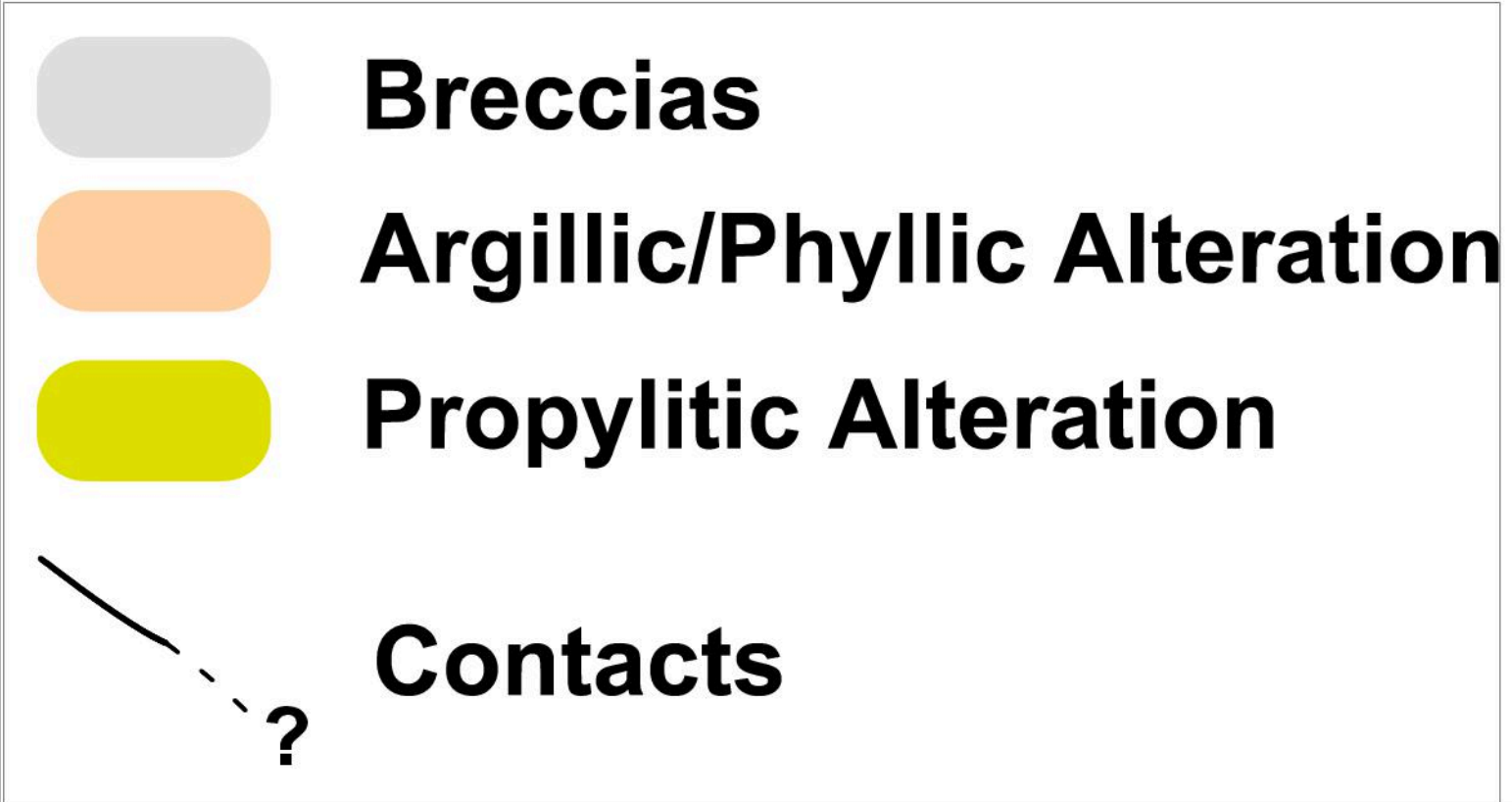
LN-32-15

LN-21-14

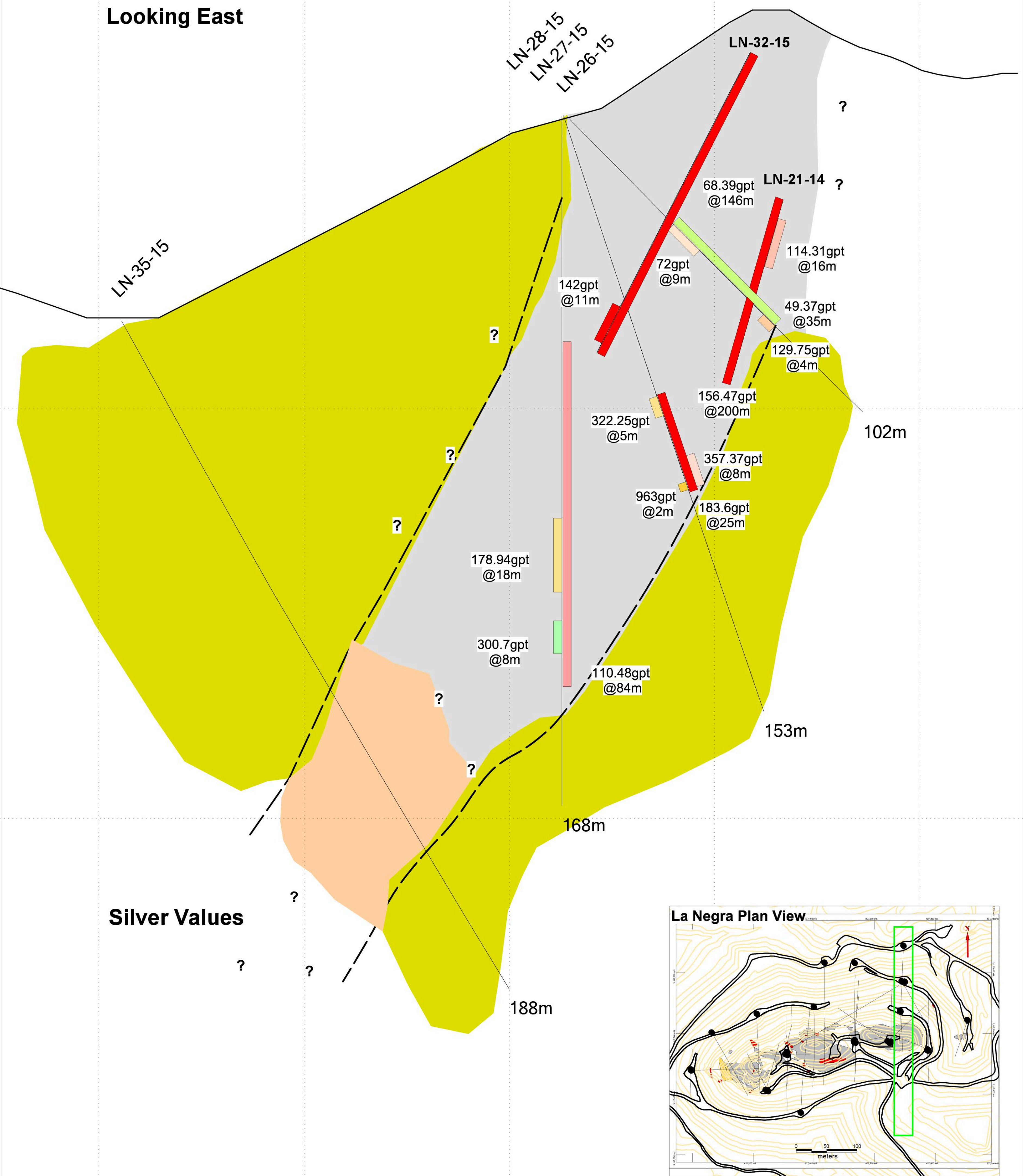
Silver Values

La Negra Plan View

0 25 50 100 meters
Cross Section
20 meters wide



| | |
|-------------------|--------------------------------|
| | |
| Date: 19/05/2015 | XS-627546 |
| Author: MJM | |
| Office: Hill, Mex | |
| Drawing: GGallego | |
| Scale: 1:500 | Projection: Non-Earth (meters) |



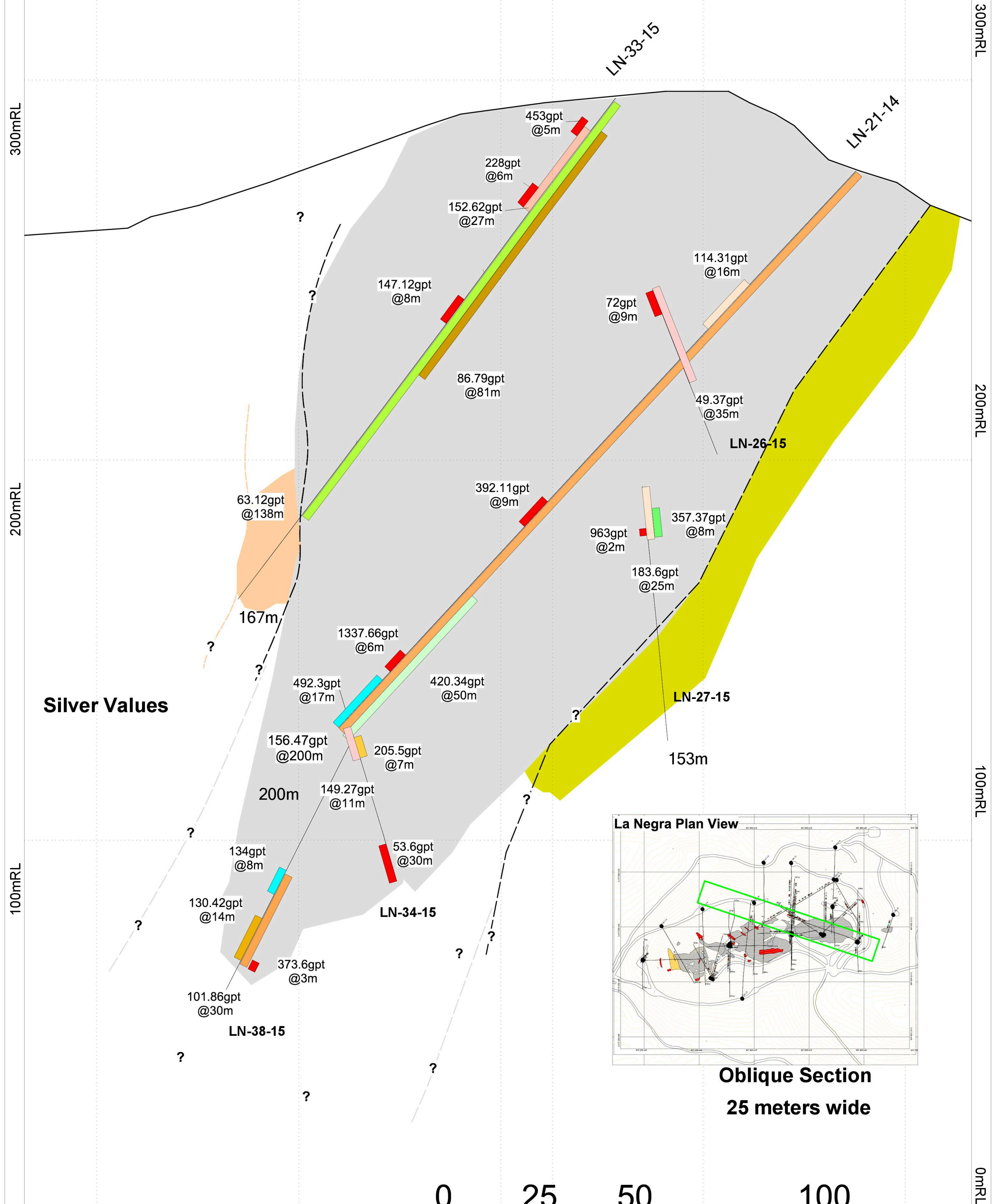
3,117,600mN

3,117,550mN

3,117,500mN

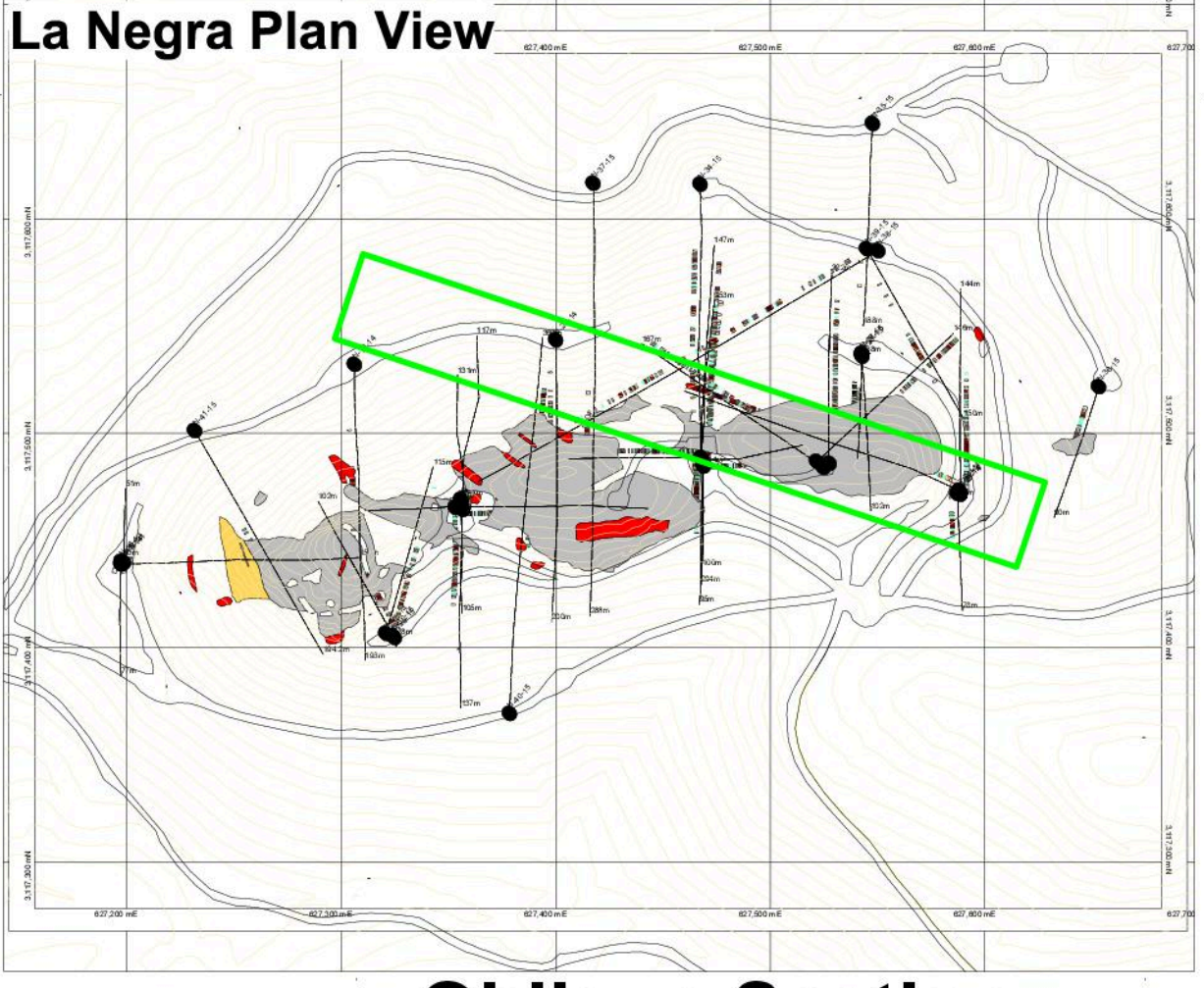
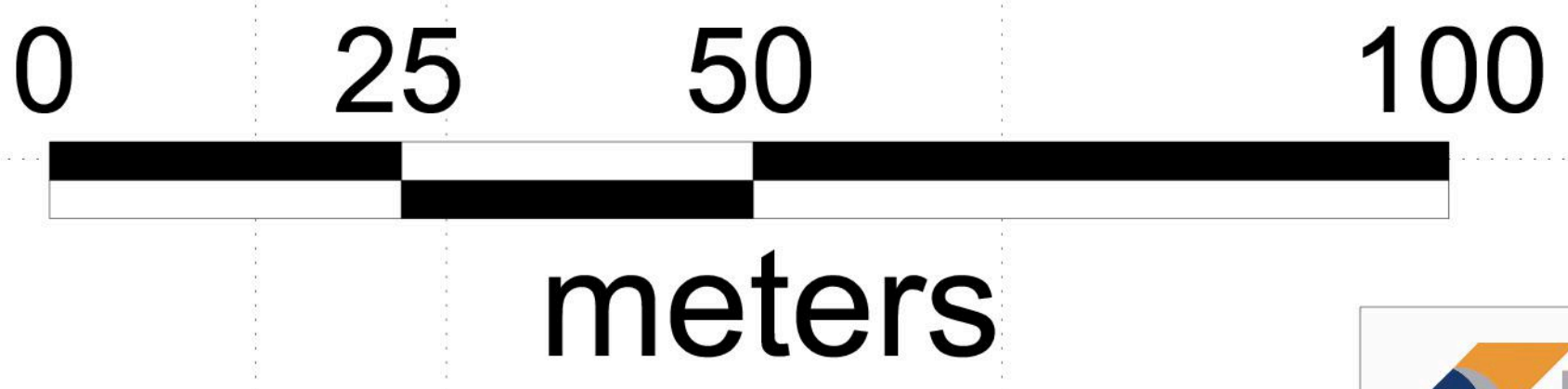
7,400mE 627,450mE 627,500mE 627,550mE 627,600mE 3,

Looking North East



0mRL

- Breccias
- Argillic/Phyllic Alteration
- Propylitic Alteration
- Contacts



Oblique Section
25 meters wide

KOOTENAY SILVER INC.

Date: 18/05/2015
Author: MJM
Office: Hilo, Mex
Drawing: GGallego
Scale: 1:500
Projection: Non-Earth (meters)

XS-627629

627,450mE 627,500mE 627,550mE

3,117,600mN

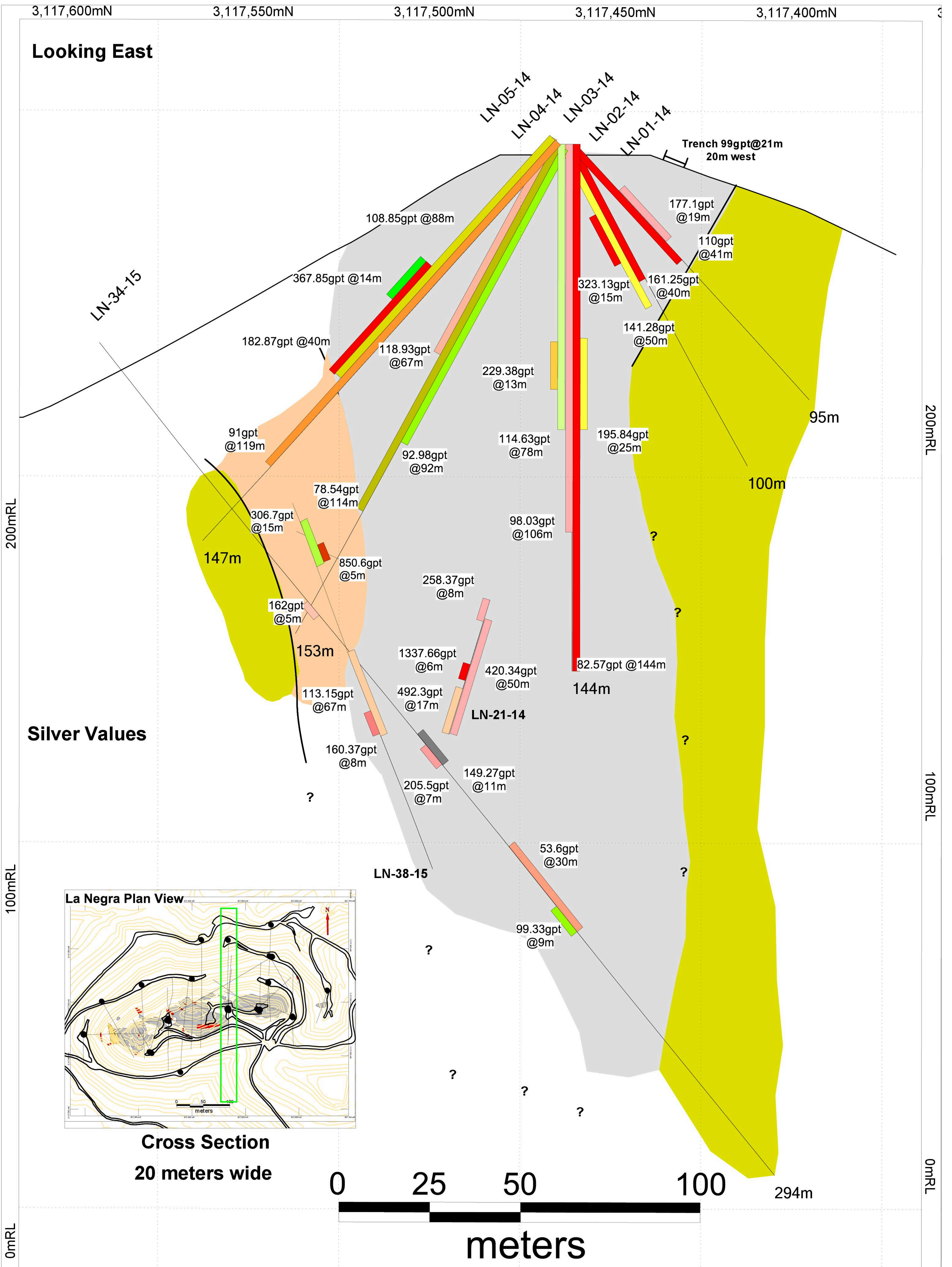
3,117,550mN

3,117,500mN

3,117,450mN

3,117,400mN

Looking East



200mRL

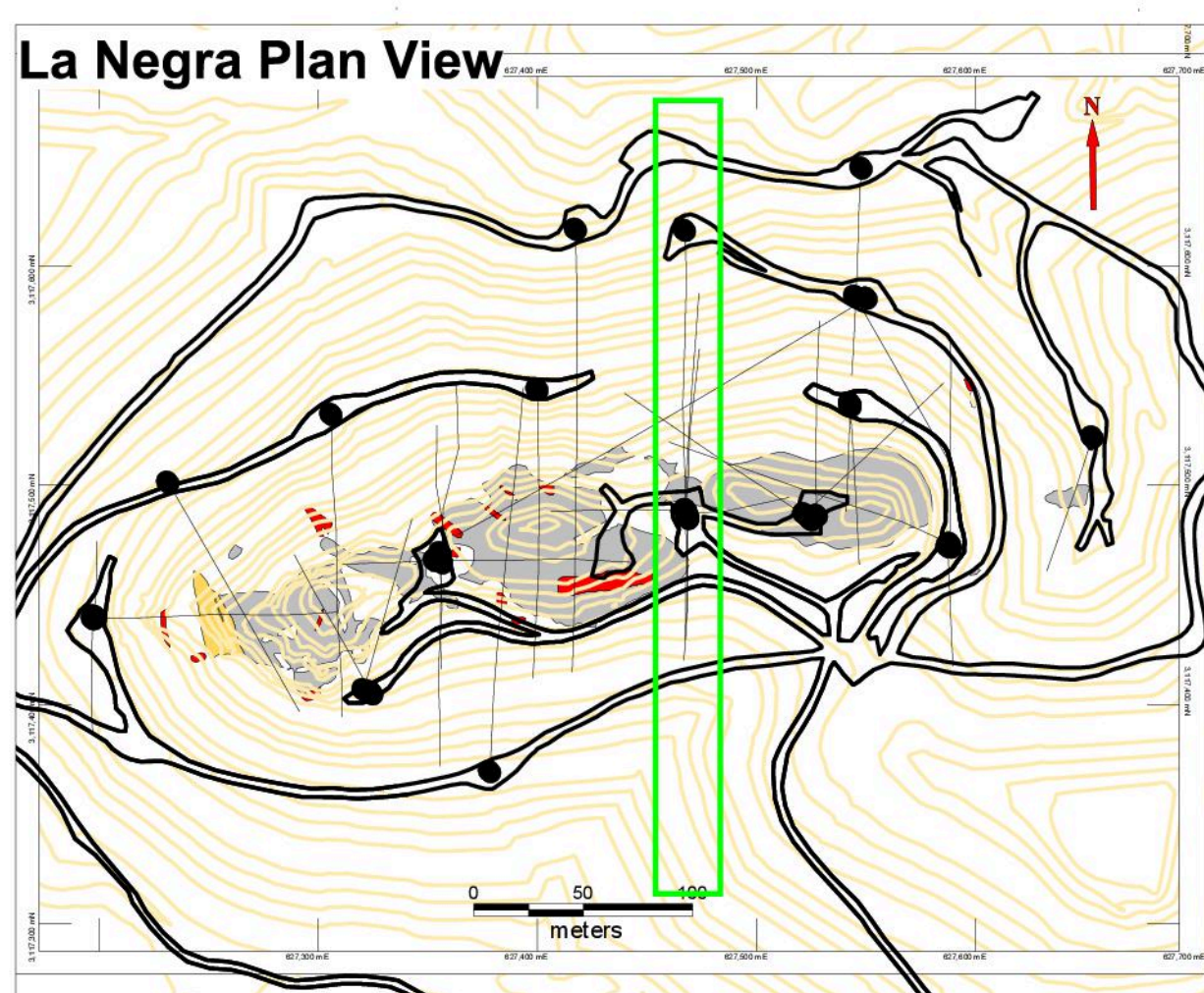
100mRL

0mRL

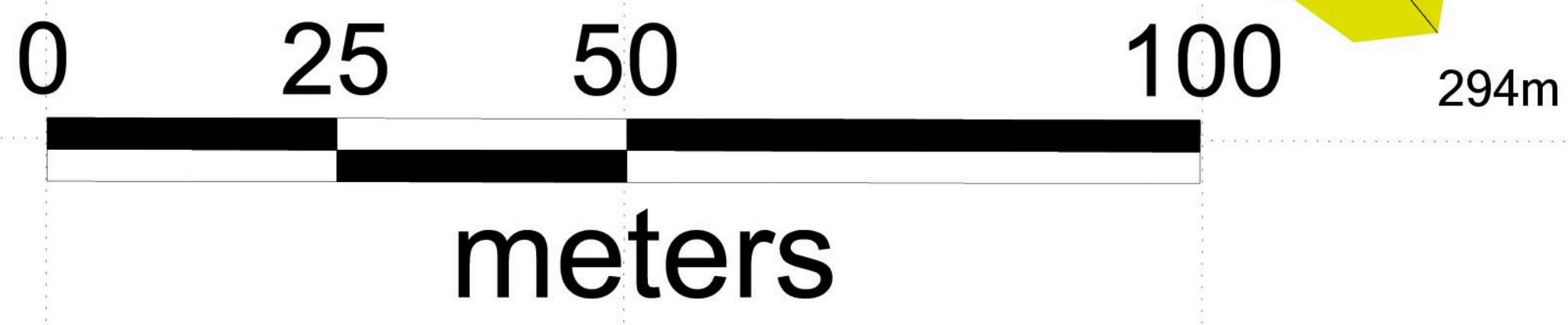
200mRL

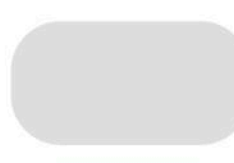



100mRL

0mRL



Cross Section
20 meters wide



-  **Breccias**
-  **Argillic/Phyllic Alteration**
-  **Propylitic Alteration**
-  **Contacts**

KOOTENAY SILVER INC.

XS-627467

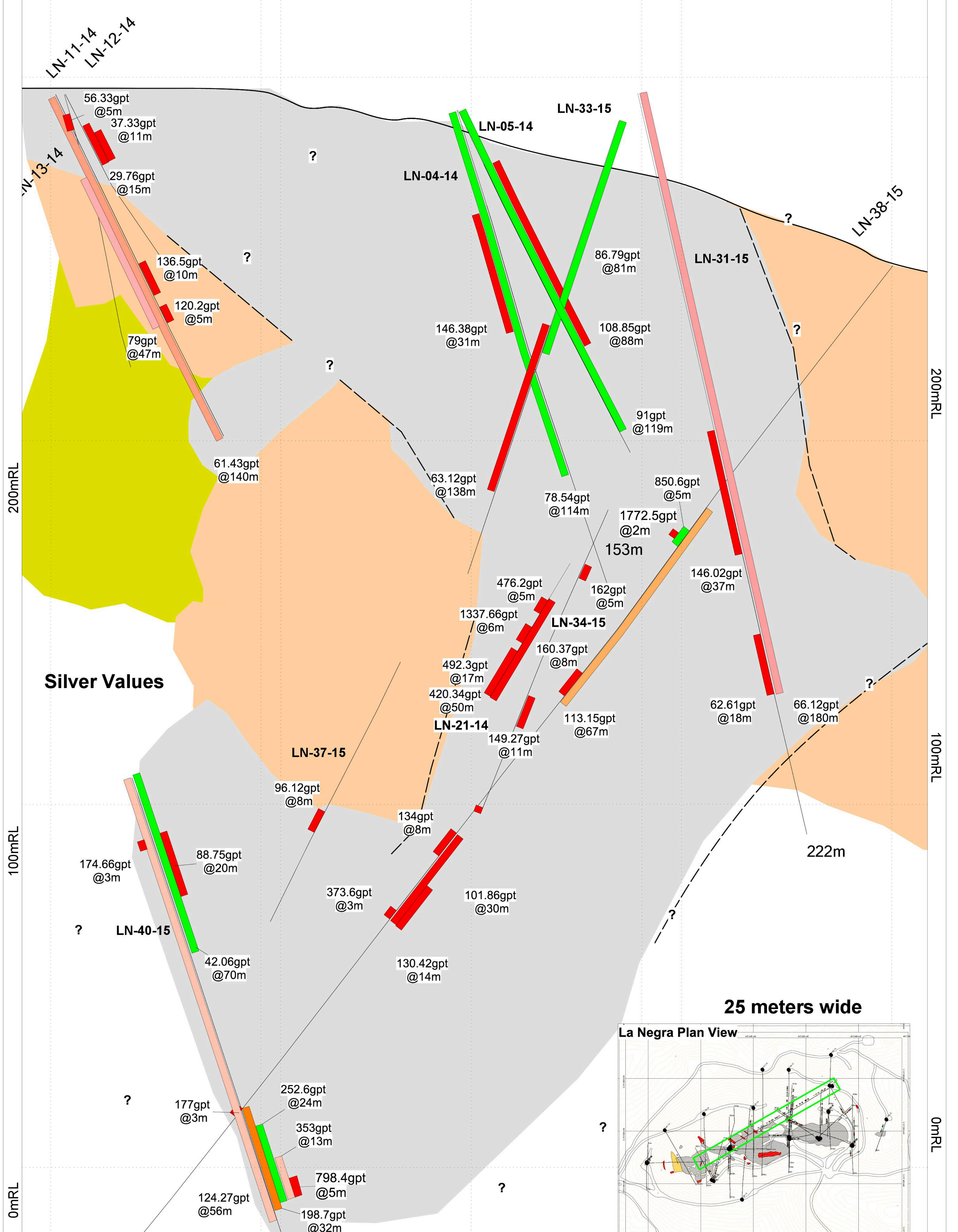
Date: 18/05/2015
 Author: M.J.M.
 Office: Hilo, Mex
 Drawing: GGallego
 Scale: 1:500
 Projection: Non-Earth (meters)

3,117,550mN

3,117,500mN

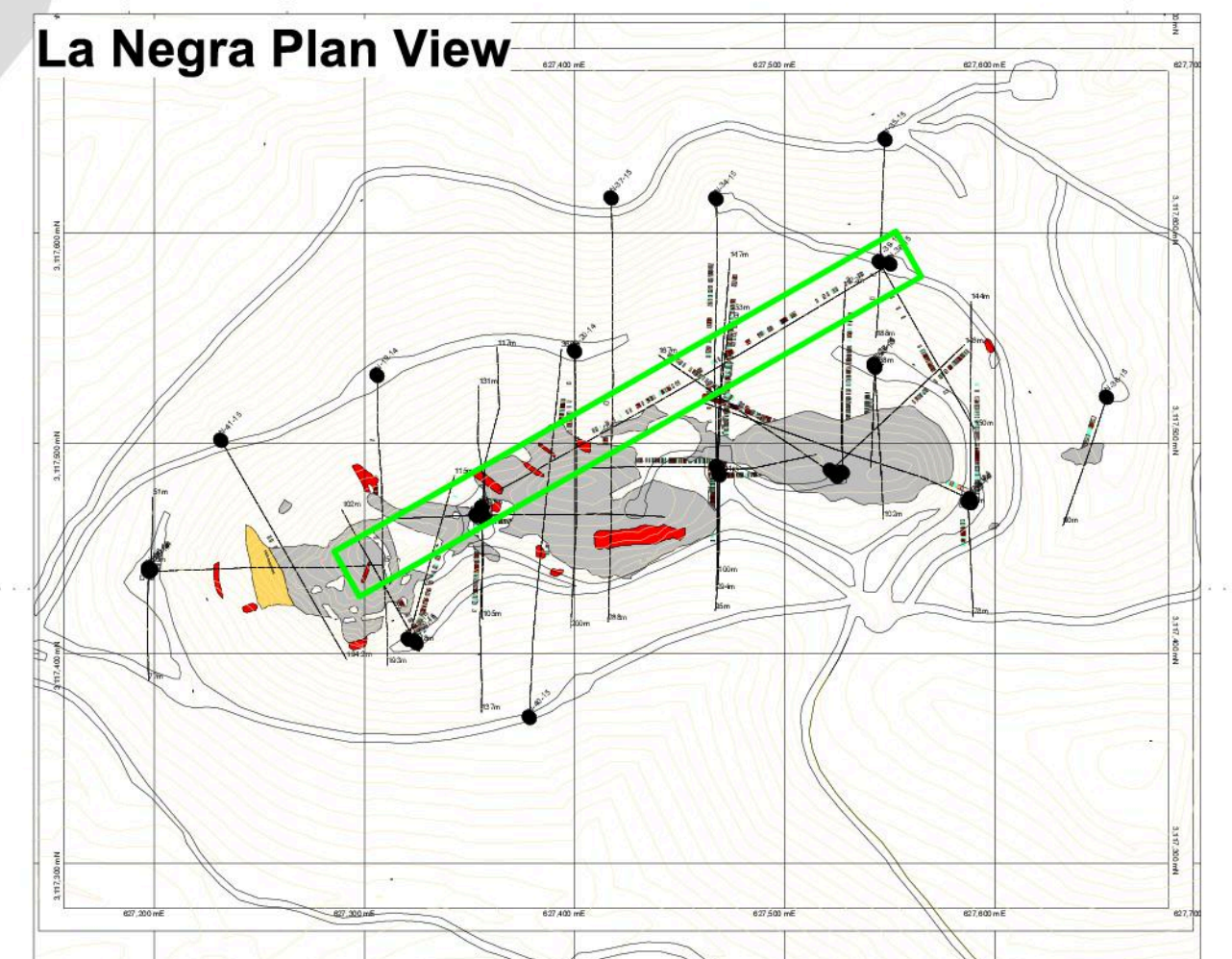
3,117,450mN

Looking Northwest

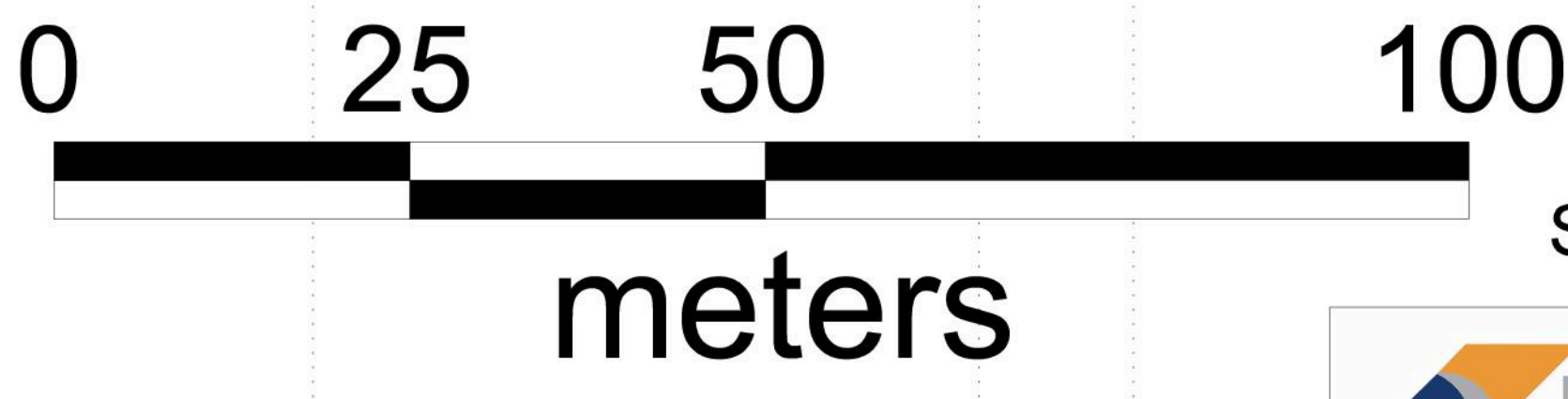


Silver Values

25 meters wide



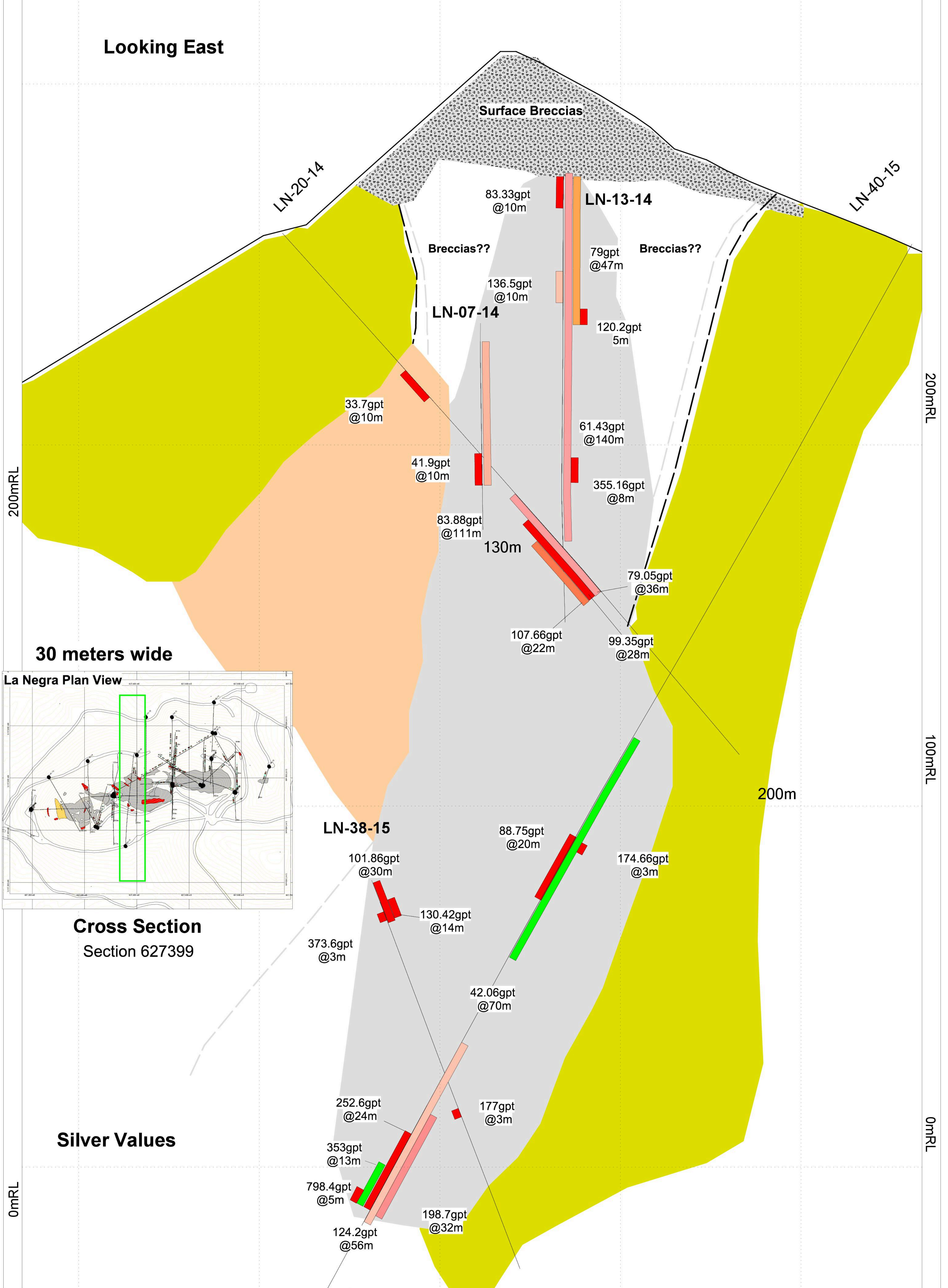
- Breccias
- Argillic/Phyllic Alteration
- Propylitic Alteration
- Contacts



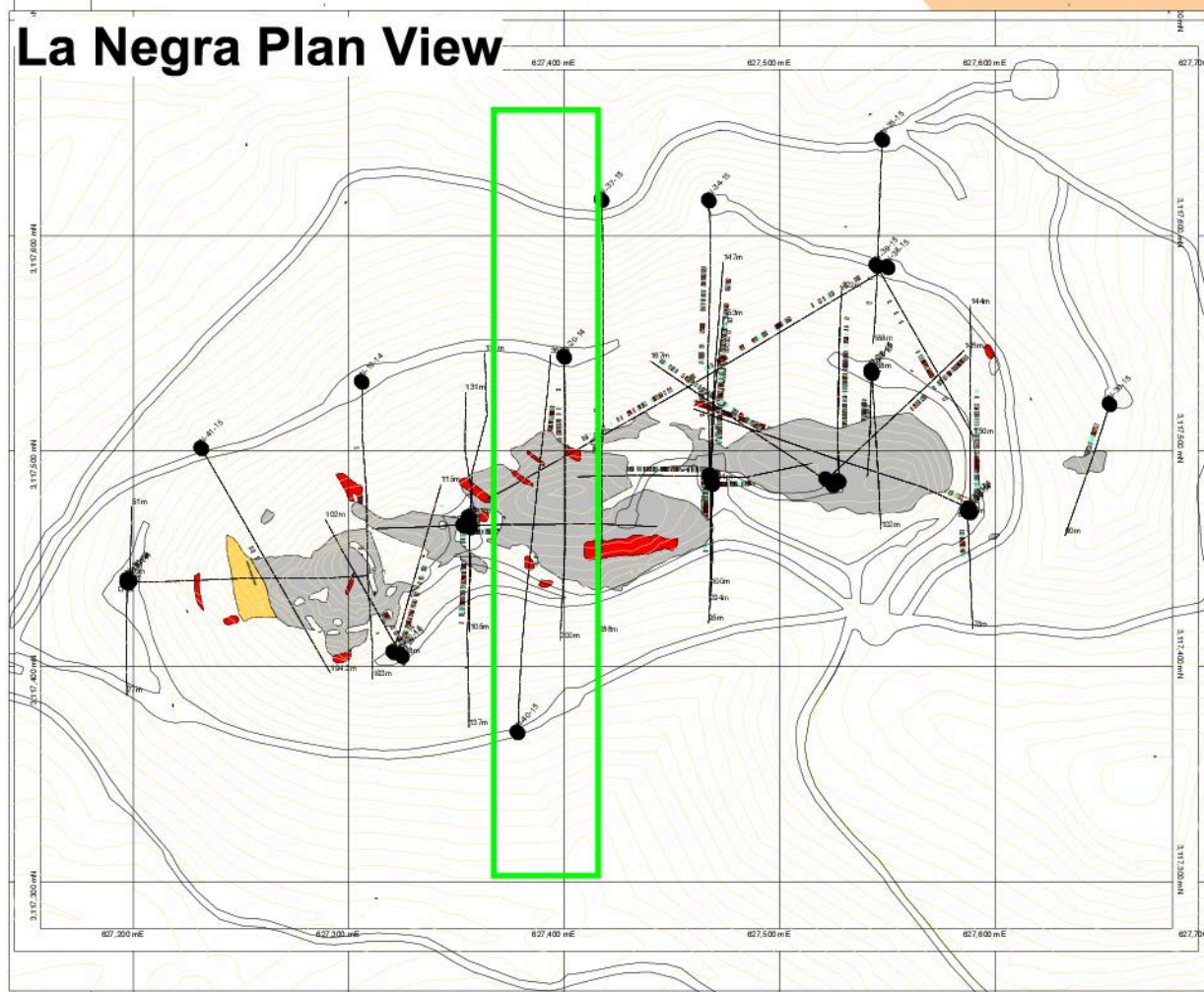
Section 627342

0mN 3,117,550mN 3,117,500mN 3,117,450mN 3,117,400mN 3,117,350mN

Looking East

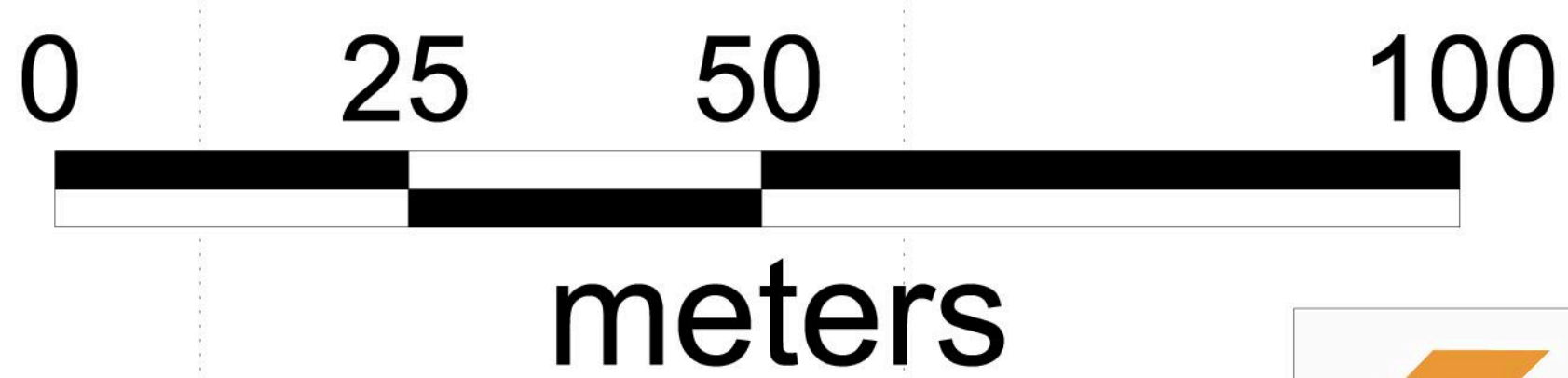
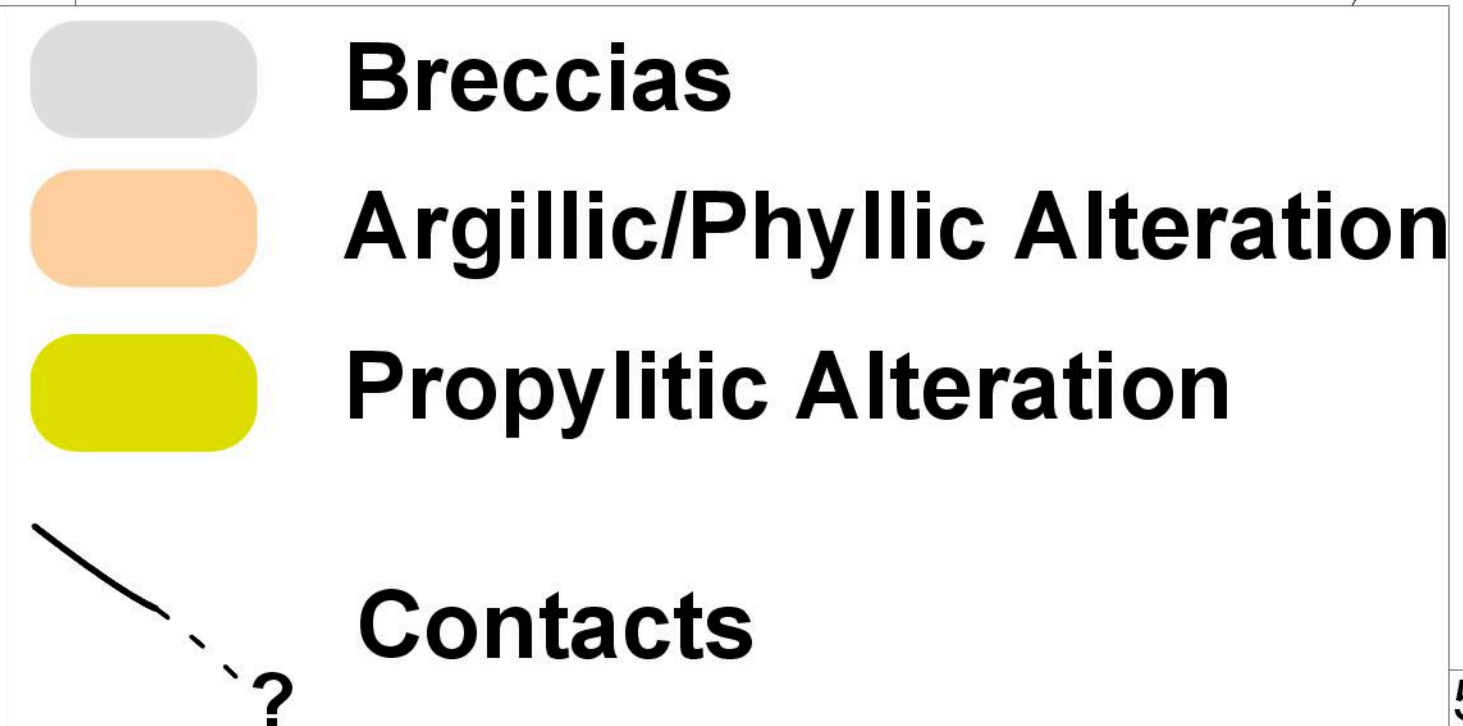


30 meters wide



Cross Section
Section 627399

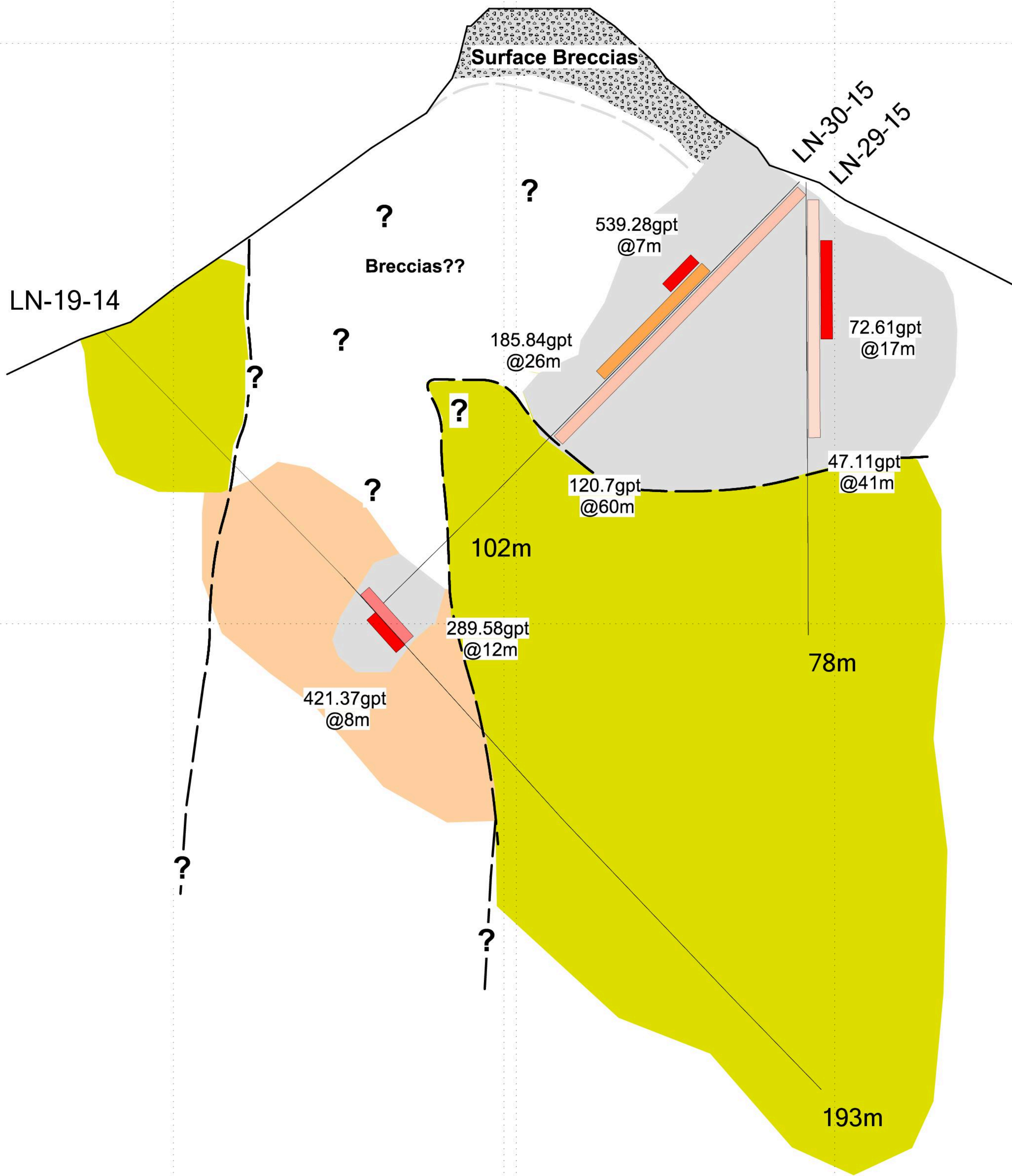
Silver Values



500mN 3,117,450mN

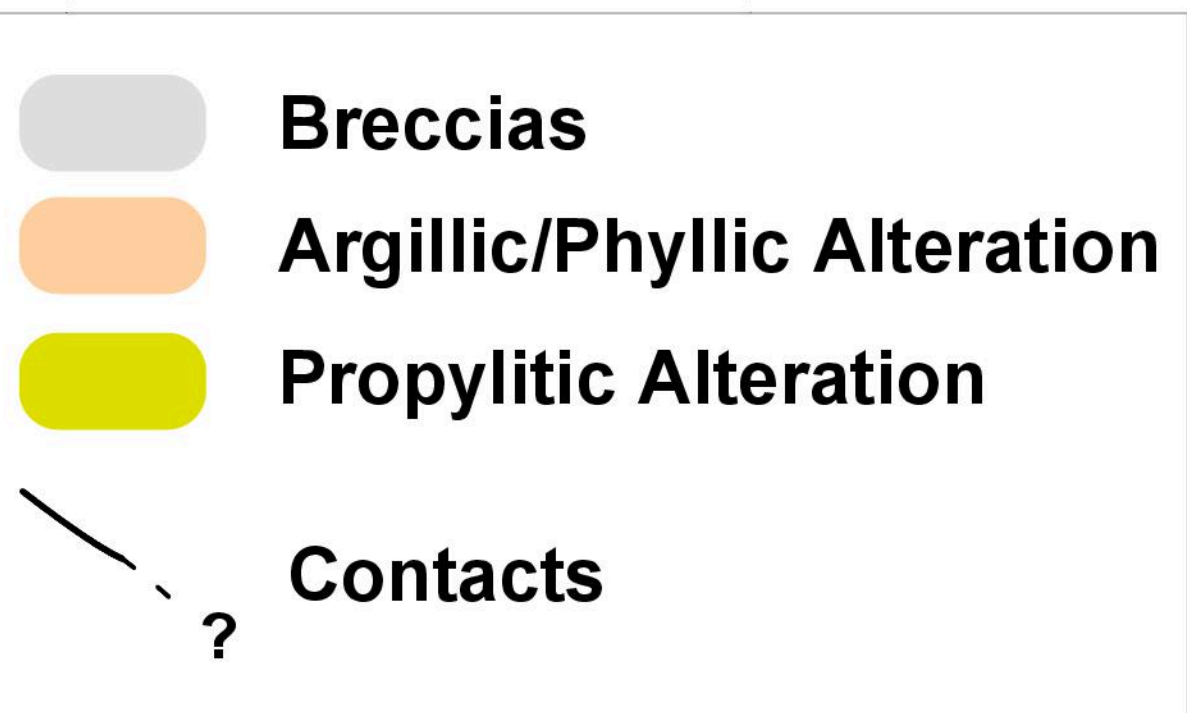
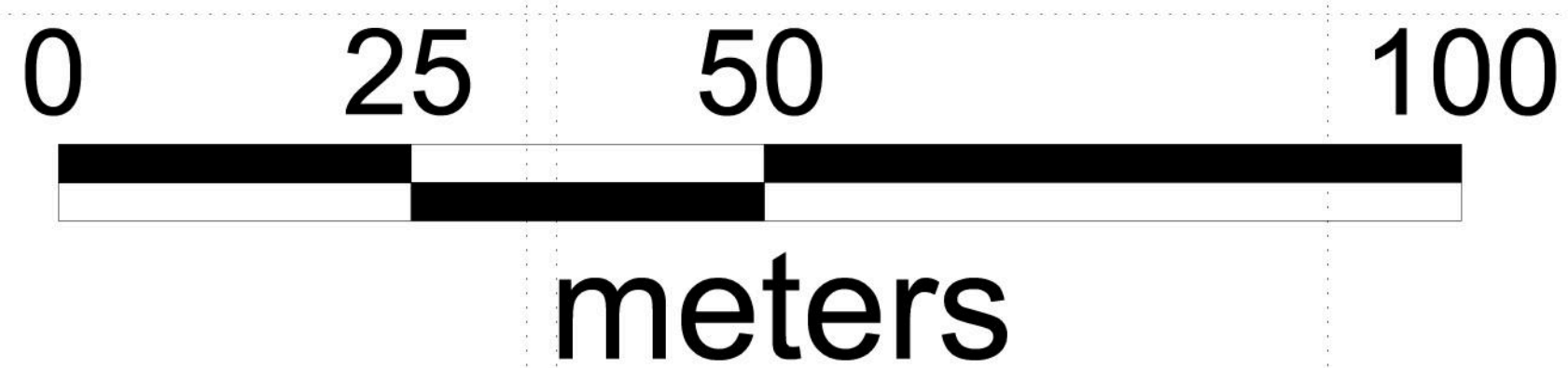
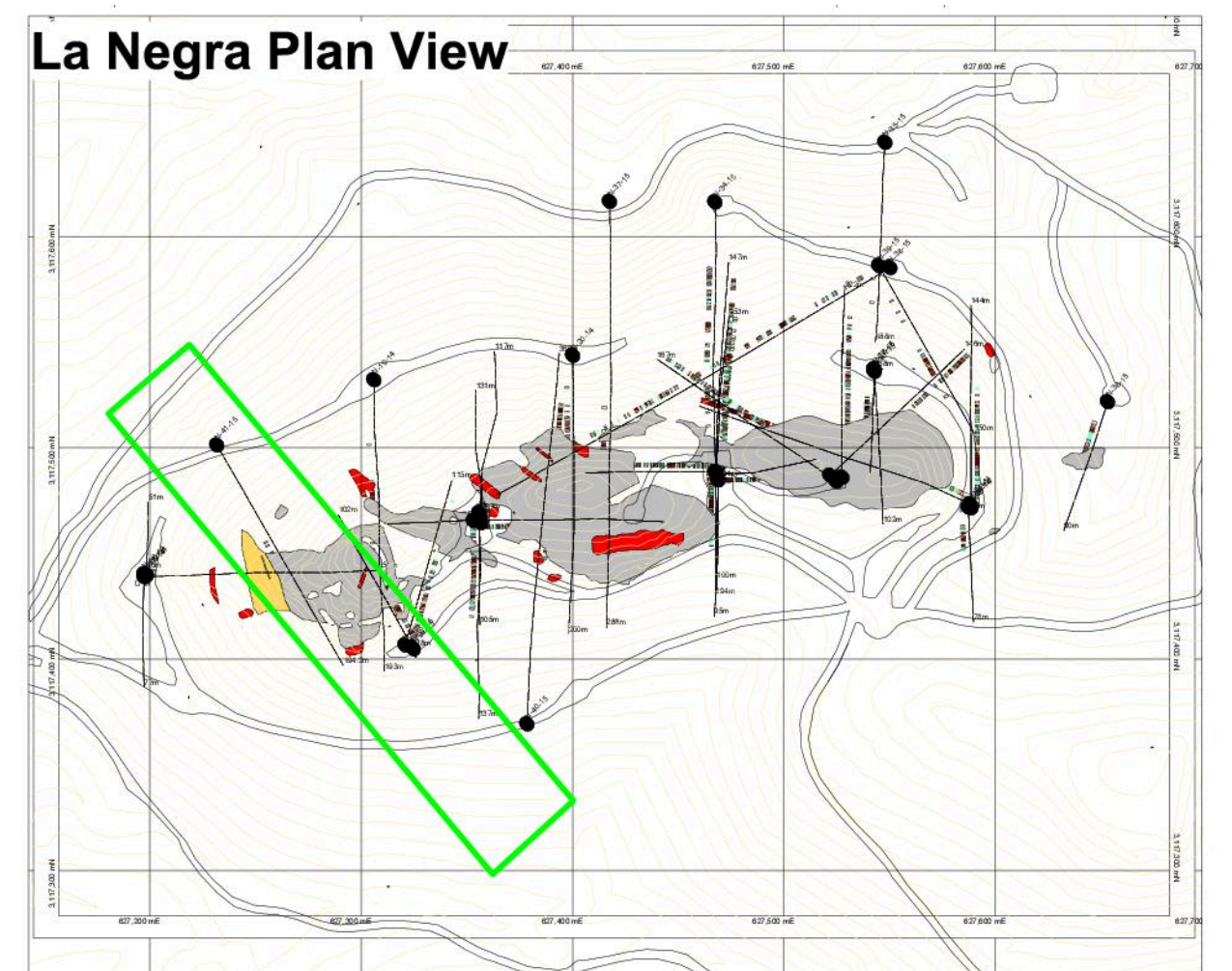
mE 3,117,500mN 3,117,250mE 3,117,400mN 3,117,550mE 3,117,700mE

Looking Northeast



Silver Values

25 meters wide



| | |
|-------------------|--------------------------------|
| Date: 18/05/2015 | XS-627346 |
| Author: MJM | |
| Office: Hilo, Mex | |
| Drawing: GGallago | |
| Scale: 1:500 | Projection: Non-Earth (meters) |

3,117,500mN 3,117,250mE 3,117,400mN

200mRL

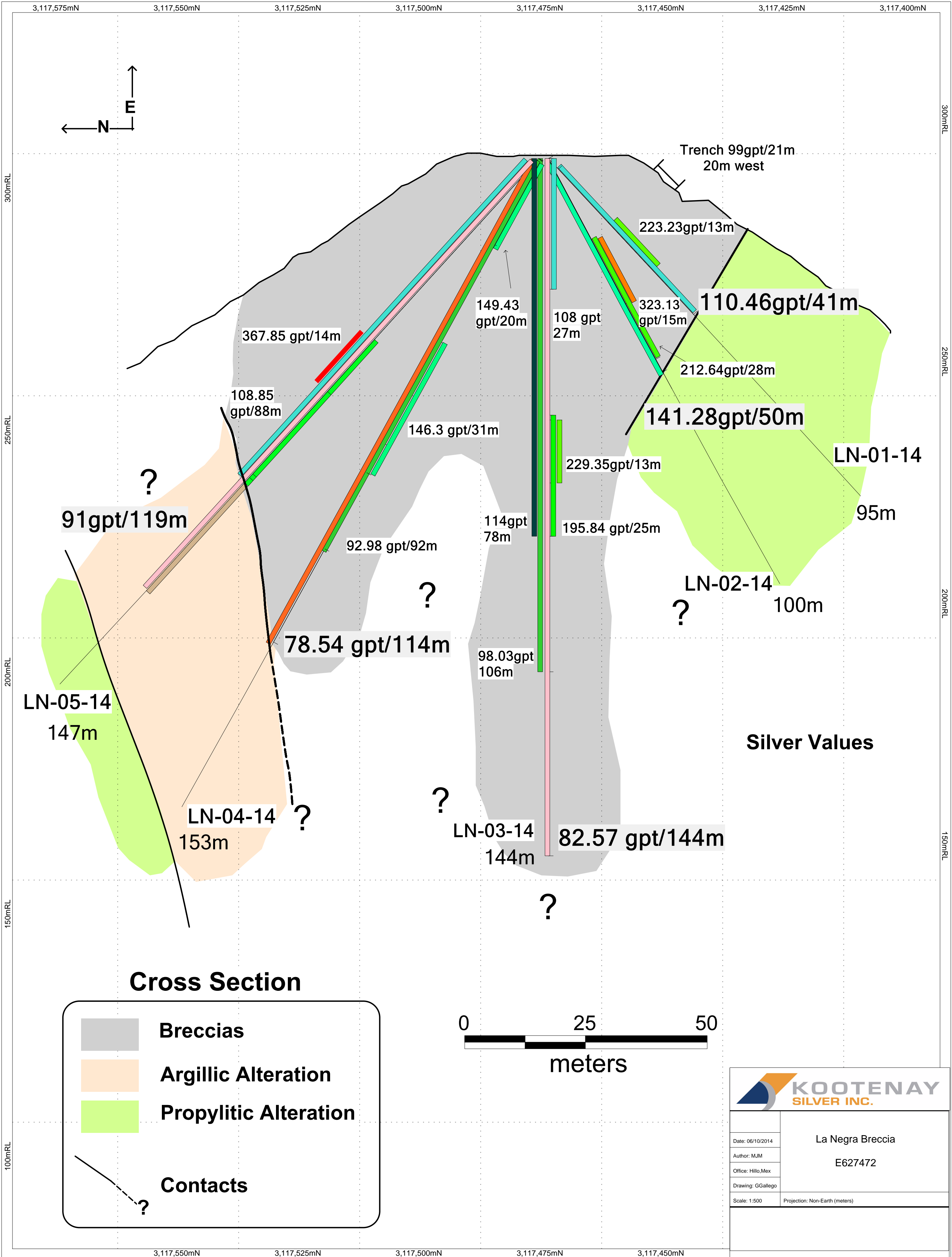
100mRL

0mRL

200mRL

100mRL

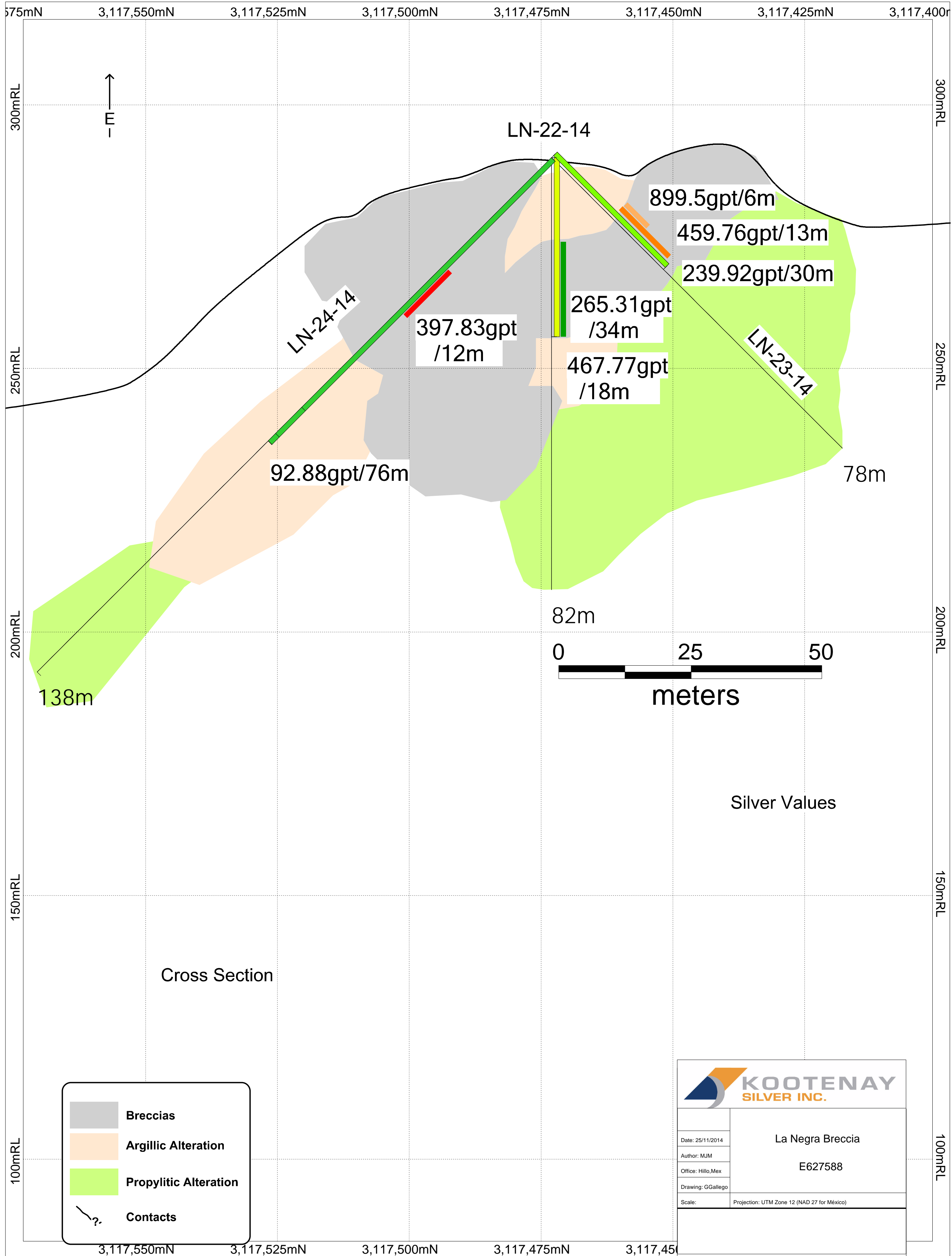
0mRL



KOOTENAY SILVER INC.

La Negra Breccia
E627472

Date: 06/10/2014
Author: MJM
Office: Hillo, Mex
Drawing: GGallego
Scale: 1:500
Projection: Non-Earth (meters)

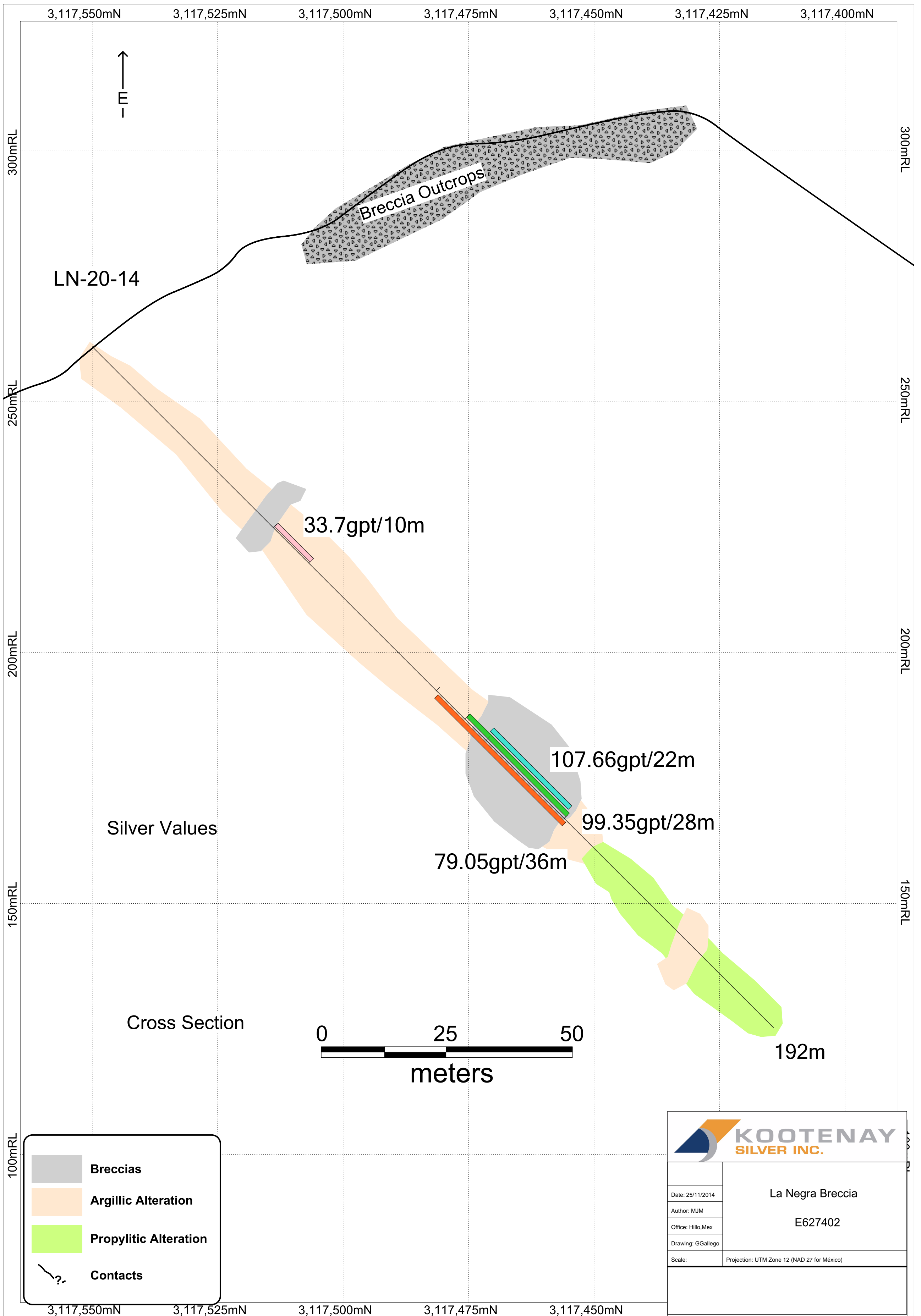




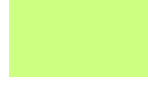

Silver Values

Cross Section

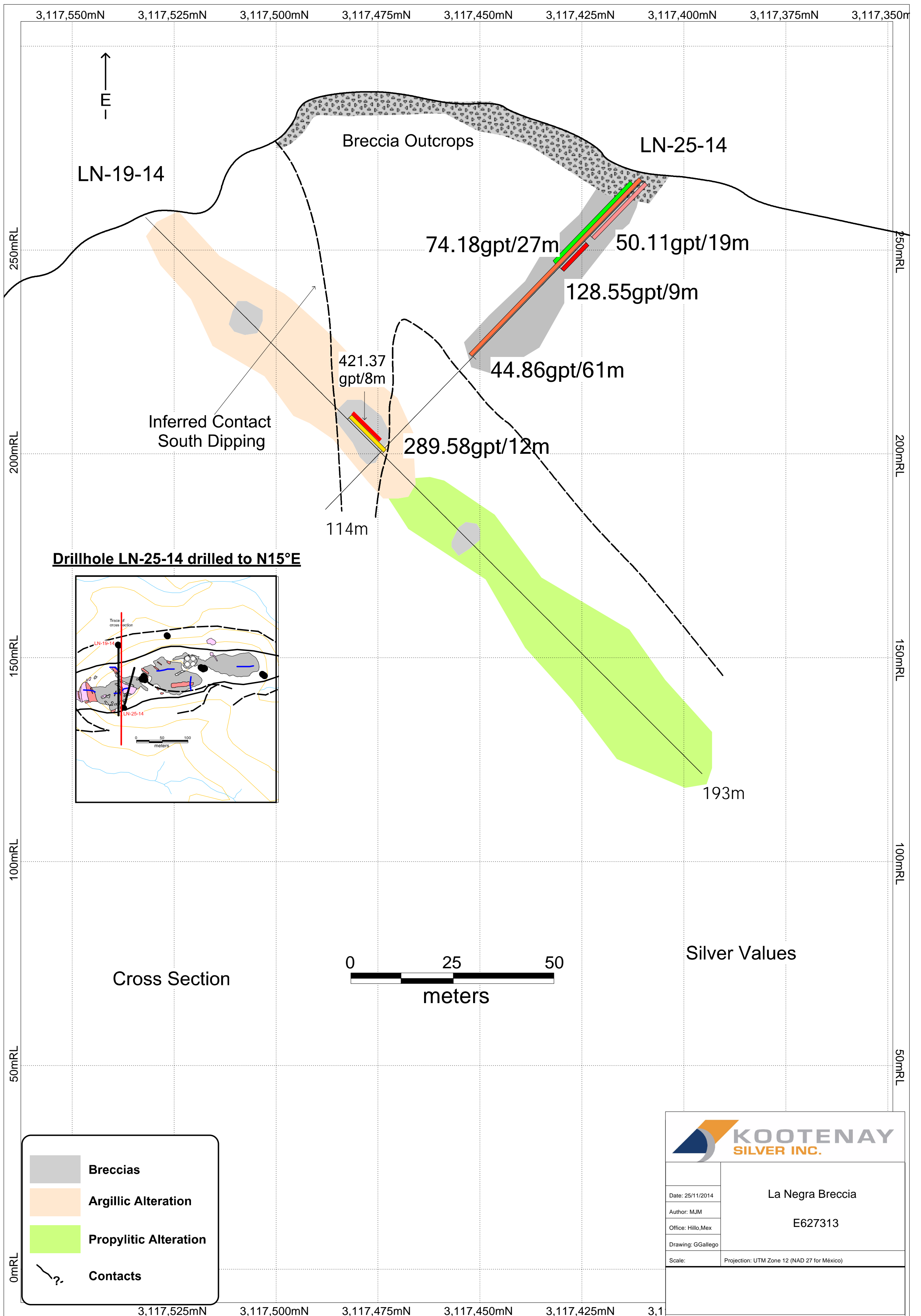
| | |
|--|------------------------------|
| | Breccias |
| | Argillic Alteration |
| | Propylitic Alteration |
| | Contacts |

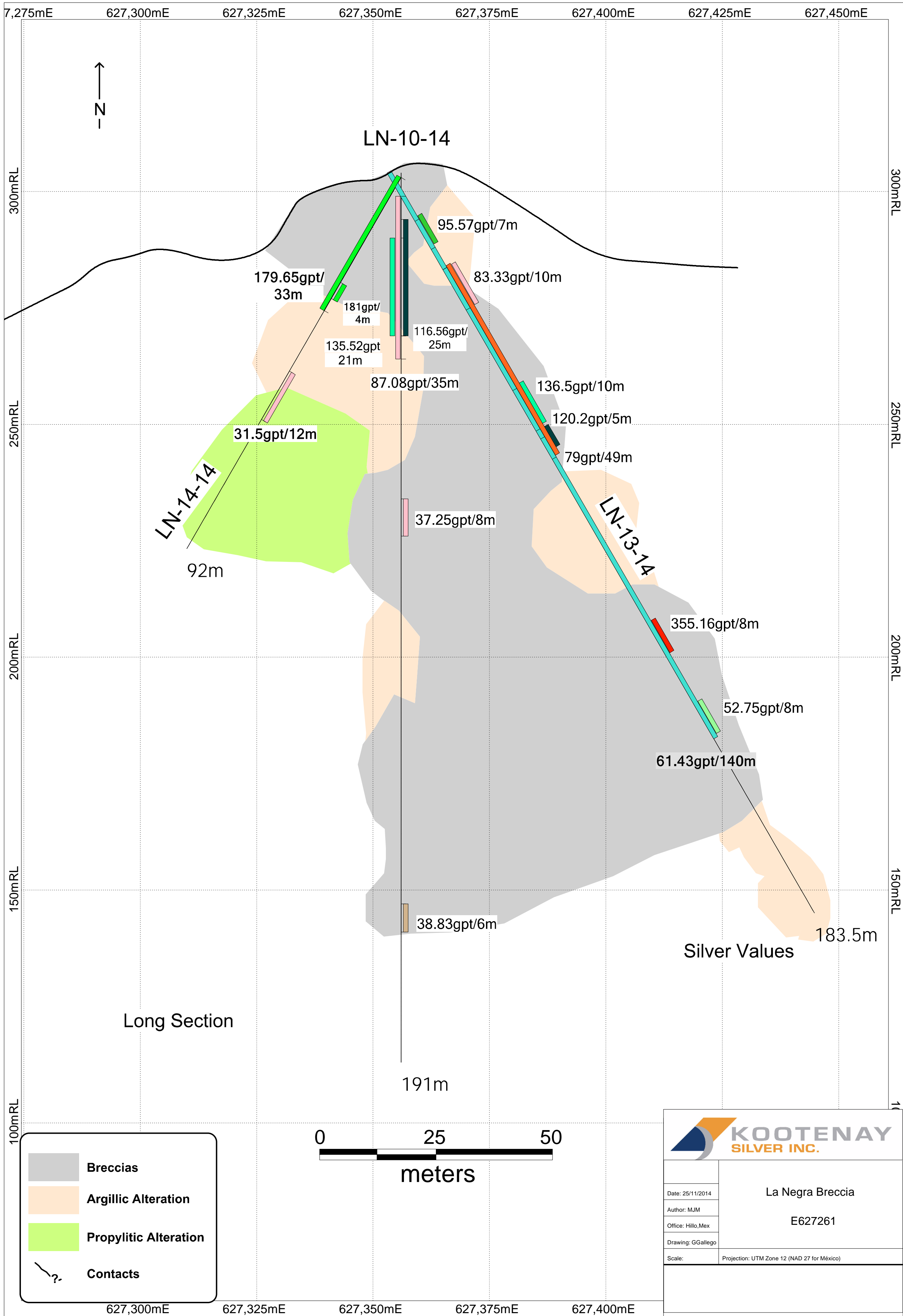
| | |
|-------------------|---------------------------------------------|
| | |
| Date: 25/11/2014 | La Negra Breccia E627588 |
| Author: MJM | |
| Office: Hilo, Mex | |
| Drawing: GGallego | |
| Scale: | Projection: UTM Zone 12 (NAD 27 for México) |

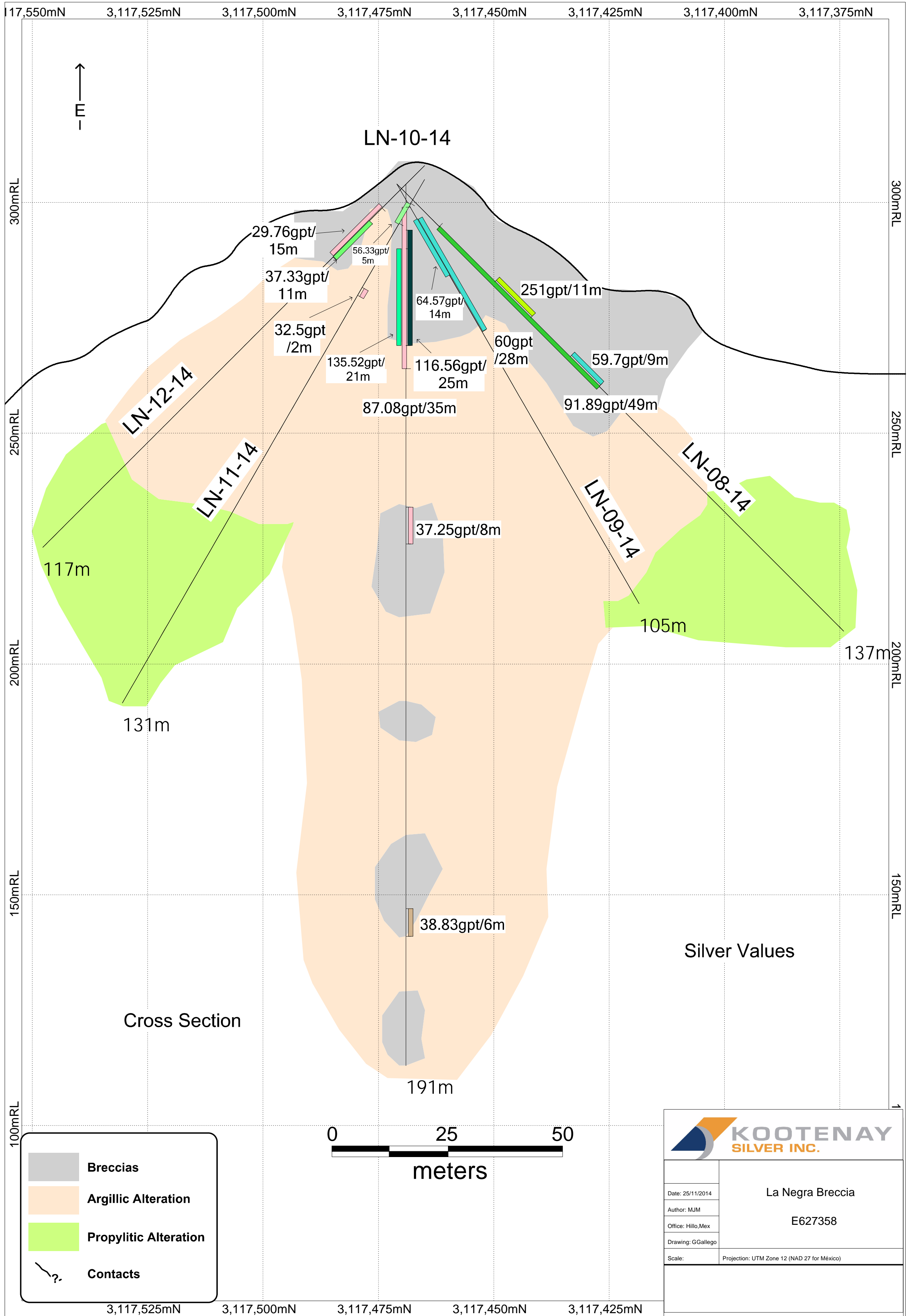


-  Breccias
-  Argillic Alteration
-  Propylitic Alteration
-  Contacts

| | |
|-------------------------------------------------------------------------------------------------------------------|---------------------------------------------|
|  KOOTENAY SILVER INC. | |
| Date: 25/11/2014 | La Negra Breccia |
| Author: MJM | E627402 |
| Office: Hillo, Mex | |
| Drawing: GGallego | |
| Scale: | Projection: UTM Zone 12 (NAD 27 for México) |

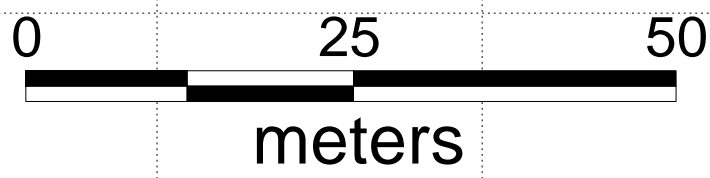






Legend

- Breccias
- Argillic Alteration
- Propylitic Alteration
- Contacts



KOOTENAY SILVER INC.

| | |
|-------------------|---------------------------------------------|
| Date: 25/11/2014 | La Negra Breccia E627358 |
| Author: MJM | |
| Office: Hilo, Mex | |
| Drawing: GGallego | |
| Scale: | Projection: UTM Zone 12 (NAD 27 for México) |